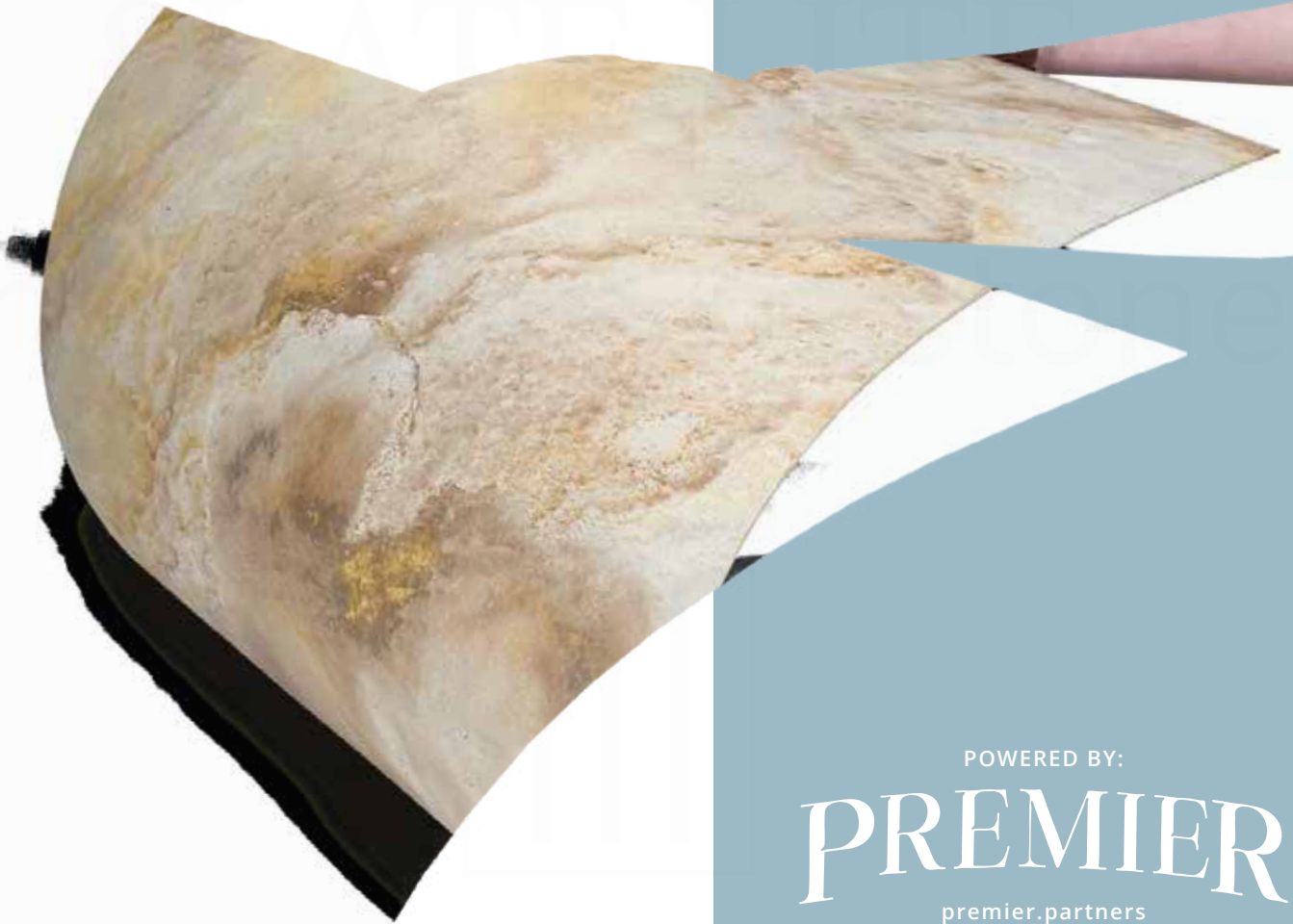


# SLATE LITE

Real stone,  
thin & flexible



POWERED BY:

**PREMIER**

[premier.partners](http://premier.partners)

the *future*  
of *stone*

# THE INNOVATION:

## REAL STONE, THIN & FLEXIBLE

Slate-Lite is an innovative **real stone veneer** that consists of an ultra-thin layer of natural stone and a backing reinforced with glass fibers or cotton.

We have developed a specialized process to extract many ultra-thin slabs from the most beautiful stone blocks in the world. Each of these slabs is a **unique piece**, **handcrafted** through **over 12 processing steps**.

Despite its lightweight nature, Slate-Lite **retains the texture and appearance of a solid stone slab**. Our stone veneer is only **approximately 1.5 mm / 0.06 inch thin** and even flexible.



PLANT-MY-TREE®



HOW IS IT POSSIBLE?





# THE ORIGINAL

SINCE 2002

100% NATURAL  
STONE SURFACE

STRONG FIBERGLAS  
BACKING

THIN &  
FLEXIBLE



# DISCOVER THE POSSIBILITIES: THE PERFECT PRODUCT FOR EVERY PROJECT



## SLATE|LITE

is our **allrounder** stone veneer with a fiberglass backing. Despite its lightweight construction and a total thickness of approx. 1.5 mm / 1/16 in, it is **extremely robust** and durable.

✓ Indoor walls ✓ Bathroom & Shower ✓ Kitchen & Backsplashes ✓ Facades & Outdoor



## TRANS|LUCENT

is the perfect match for becoming a **light designer!**

The light-transmitting backside creates unique lighting effects when there is a light source behind the stone sheet, allowing you to create extraordinary **backlit objects!**

✓ Backlit objects ✓ Indoor & Outdoor ✓ Shopfitting ✓ Bathroom & Shower



## ULTRA|THIN<sup>eco+</sup>

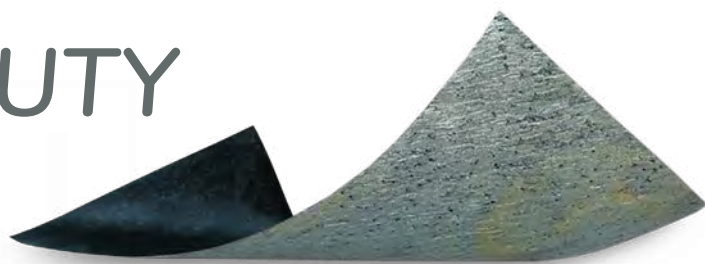
is our **flexibility miracle** with a cotton mat as its base.

With UltraThin eco+, you can even master **complex custom shapes** and challenging edge areas!

✓ Indoor walls ✓ Special shapes ✓ 3D ✓ Furniture



# ENJOY THE *BEAUTY* OF NATURE



Slate-Lite is handcrafted from natural layered stone.

► **Each stone sheet is a unique masterpiece!** ◀


Color variations in individual sheets, quartz veins running through the stone, or natural cracks and structural changes are qualities of the 100% natural stone surface.



GET YOUR  
SAMPLES





A modern interior scene featuring a dining table, a brass pendant lamp, and a textured wall. The scene is composed of several elements: a wooden dining table in the foreground, a brass pendant lamp with three stacked shades hanging from the ceiling, a textured wall with a mix of grey, brown, and green tones, a white bust on a white pedestal, a glass vase with a green plant, and a white door in the background. The text "ARCOBALENO COLORE NEW" is overlaid in the center of the image.

ARCOBALENO COLORE NEW

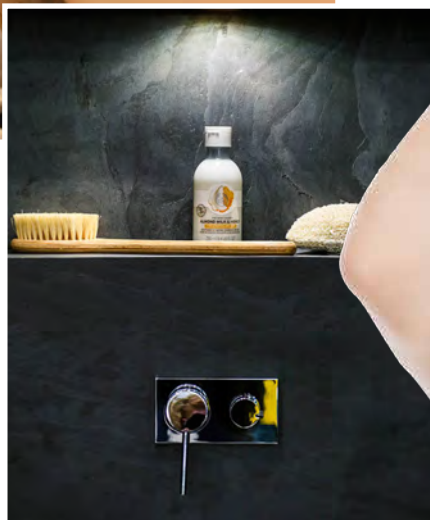




FALLING LEAVES (TRANSLUCENT)







## YOUR NEW DREAM BATHROOM MADE OF NATURAL STONE

- ✓ Installable directly onto old tiles
- ✓ Nearly seamless thanks to XXL formats
- ✓ Water-resistant & durable



INTERNATIONAL



USA

GET INSPIRED:  
MORE PROJECT  
PICTURES!

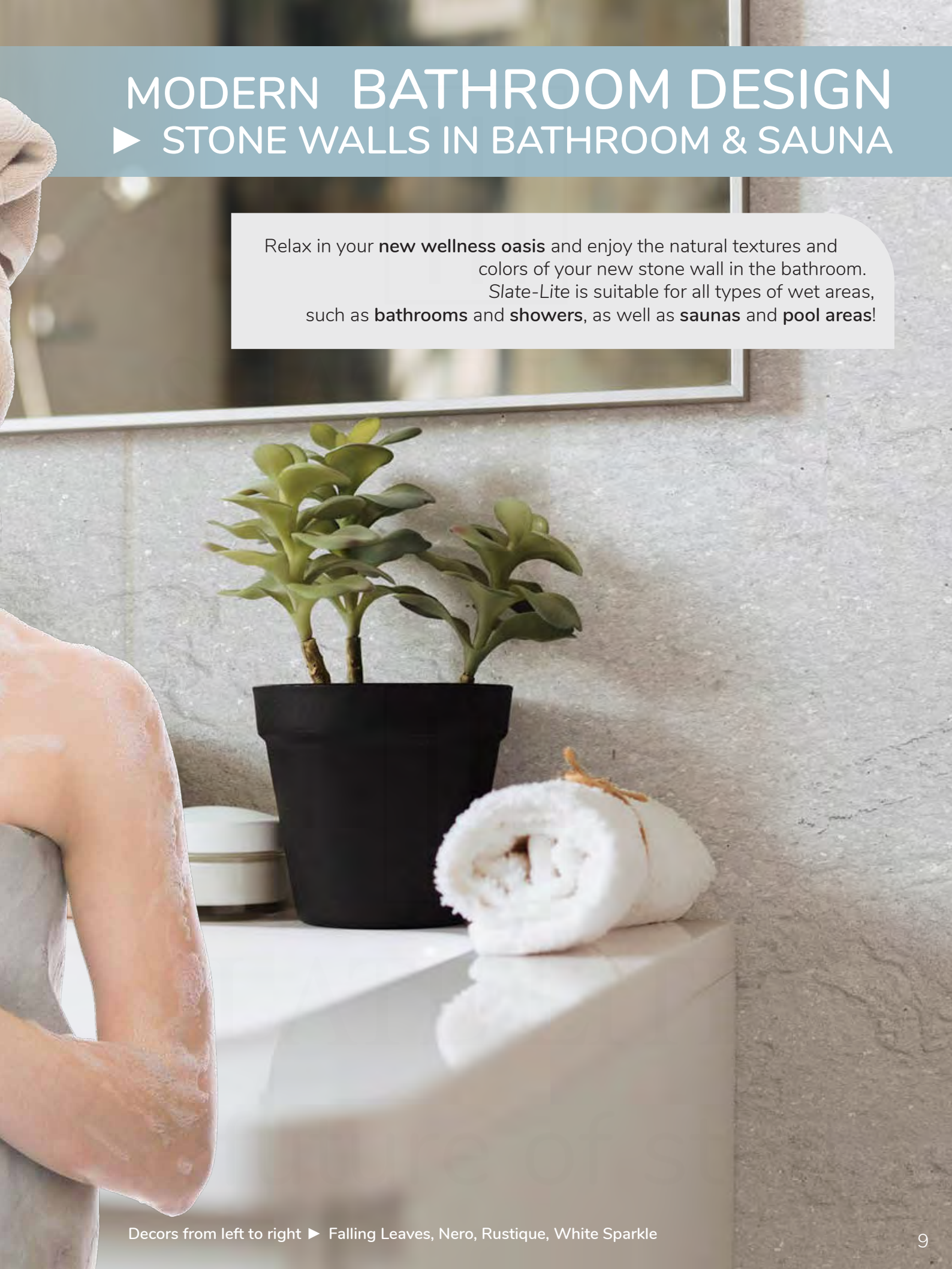




# MODERN BATHROOM DESIGN

## ► STONE WALLS IN BATHROOM & SAUNA

Relax in your **new wellness oasis** and enjoy the natural textures and colors of your new stone wall in the bathroom. *Slate-Lite* is suitable for all types of wet areas, such as **bathrooms** and **showers**, as well as **saunas** and **pool areas**!







Decors from left to right ► Terra Noir horizontal, Blanco, Silver Grey, Nero





# HIGHLIGHTS

FROM NATURAL STONE

# FOR YOUR ROOMS



- ✓ Easy to process
- ✓ Variable sizes: Every wall is unique!
- ✓ The texture of a solid stone slab



INTERNATIONAL



USA

GET INSPIRED:  
MORE PROJECT  
PICTURES!





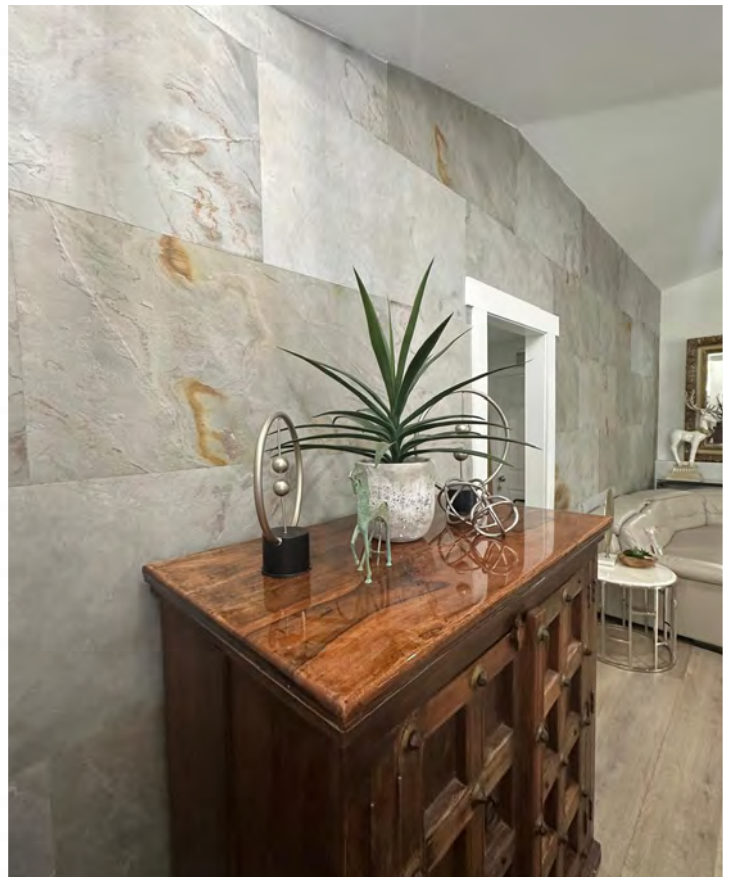
# EXPERIENCE INTERIORS ANEW: ▶ WALL COVERINGS MADE OF REAL STONE



Forget about wall coverings in stone look,  
**real natural stone** with **vivid textures** is the key!

Bring a new sense of life to your own space, transforming  
your home into a place that inspires, calms, and amazes you:  
Quick and easy, **can be processed with all common DIY tools.**



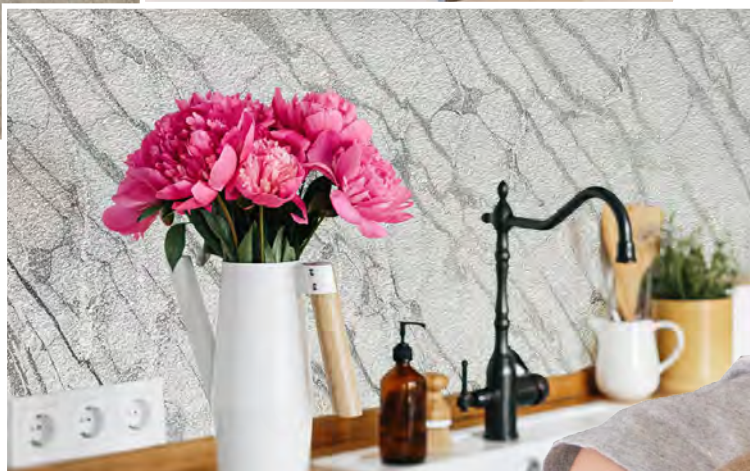


Decors from left to right ► D.Black 45°, Silver Grey, Blanco, Rainforest Brown Bright









## MODERN & STYLISH KITCHEN DESIGN WITH REAL NATURAL STONE

- ✓ Can be installed directly over old tiles
- ✓ Customized to your desired dimensions with XXL formats
- ✓ Durable & easy to maintain



INTERNATIONAL



USA

GET INSPIRED:  
MORE PROJECT  
PICTURES!





# FACELIFT FOR YOUR KITCHEN:

## ► BACKSPLASHES MADE OF REAL STONE



The kitchen is the heart of your home. Rediscover your love for your kitchen and give the kitchen **backsplash** wall or the kitchen fronts the rejuvenation they deserve!

With **XXL formats**, even **seamless** and available in **custom dimensions**. If needed, it can also be installed **directly over old tiles**.





Decors from left to right ► Rainforest Green, Rustique (TL), Nero (stacking stones), Nero









- ✓ UV-resistant & frost-proof
- ✓ More robust than raw stone slabs
- ✓ Water-resistant & easy to maintain



Slate-Lite can be easily adhered as a finishing top layer in an External Thermal Insulation Composite System (ETICS) facade!

The basic construction of the ETICS facade is carried out without any special requirements according to applicable regulations and standards.

GET INSPIRED:  
MORE PROJECT  
PICTURES!



INTERNATIONAL



USA





# OUTDOOR AREAS & FACADES

## ► ROBUST & ELEGANTS!

Whether as a **design accent** in the garden, as a **natural privacy screen**, or as a complete **natural stone facade**: Slate-Lite is also your reliable partner for modern architecture in outdoor areas!

The easiest way to achieve your dream facade is the **ETICS facade**, the most widely used type: Here, you simply adhere our **frost-resistant stone veneers** as the final top layer without further modifications!





Decors from left to right ► Galaxy Black, Burning Forest, Nero, Verde Gris









- ✓ Heat resistant up to 120°C / 248°F
- ✓ Fire class up to Cs3d0
- ✓ Robust & easy to maintain

## WARM DESIGN FOR COLD DAYS



Slate-Lite standardly has the Fire-EU class **Cfl-s1** (according to EN 13501-01 for floor coverings) or **B1** (according to DIN 4102).

Upon request, Slate-Lite is also available in a special composition with the fire class **Cs3d0** (wall)!



INTERNATIONAL



USA

GET INSPIRED:  
MORE PROJECT  
PICTURES!



www.benjo.design // Instagram: @benjo\_in\_design



# MODERN FIREPLACES:

## ► FIREPLACE CLADDINGS & BACKSPLASHES



Crackling fireplace and cozy warmth - with our stone veneers, this experience becomes even more intense. Easy to use, *Slate-Lite* brings the **unmatched style of natural stone** directly into your home.

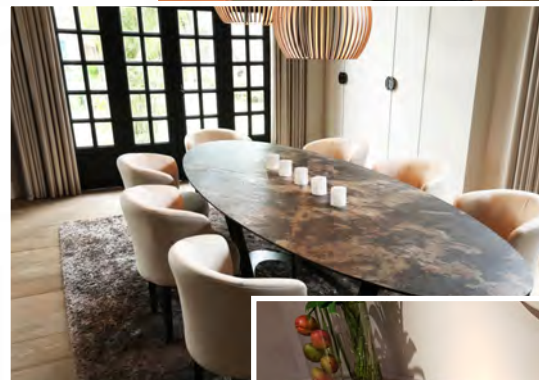
*Slate-Lite* is not only an eye-catcher but also robust enough to withstand high temperatures.





# PURE STONE, PURE ELEGANCE!

- ✓ Every piece is unique
- ✓ Can be pressed onto almost any surface
- ✓ Easy to process



Eugene Tomasson / Atelier Minerva



INTERNATIONAL



USA

GET INSPIRED:  
MORE PROJECT  
PICTURES!





# UNIQUE DESIGN FURNITURE

## ► LIVING TRENDS WITH NATURAL STONE



Design and production by IN RETAIL

Individuality and aesthetics with effortless processing:  
Our thin stone veneers can be **easily cut and pressed**  
onto almost any imaginable surface!

Whether it's MDF, chipboard, plywood, HDF, or AluDibond:  
**Slate-Lite is the perfect material combination.**



# SHOPFITTING & CREATIVE

► SO MUCH MORE TO EXPLORE!







ULTRA THIN<sup>MADE WITH eco+</sup>

- ✓ Ready for your branding with UV printing
- ✓ Logos & custom shapes can be laser cut
- ✓ Backlit stone thanks to Translucent



Slate-Lite can do even more than you might think: Our stone veneers are also the perfect companion for creating a promotional ambiance in any **restaurant, store, or public presentation space.**

Thanks to our **laser service**, logos can quickly & easily be created from real stone, **backlit objects** attract attention, and even **our stone surface is printable!**

But that's not all: Many designers use our thin stone veneers for creative solutions and designs - from individual pieces to serial production.



INTERNATIONAL



USA

GET INSPIRED:  
MORE PROJECT  
PICTURES!



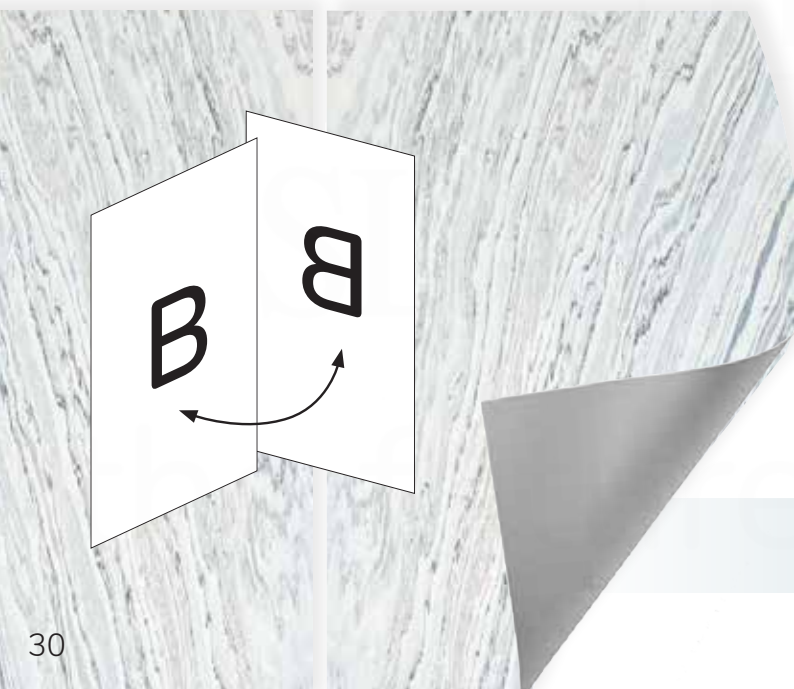


# BOOKMATCHING

## EYE-CATCHER IN XXL FORMAT



Bookmatching Arctic White



OVER **12** LAYING OPTIONS:

A	B	B	A	C	D
C	D	D	C	A	B



ARCTIC WHITE



RAINBOW



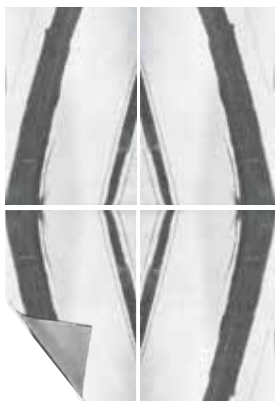
MYSTIC WHITE



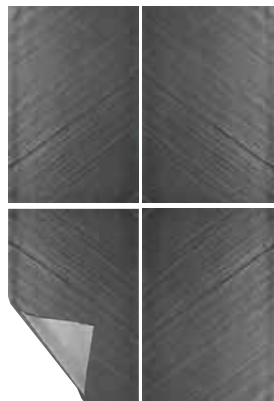
TEAK WOOD



PANDA WHITE



D.BLACK



## FOR THOSE WHO LIKE IT **BIG:**

Our bookmatching sets consist of **multiple stone veneers** with **mirrored patterns** for an impressive overall look on your wall.  
Available in different sizes and decors!



See the amazing structures and laying options in our video!





# ACOUSTIC PANELS

## STYLISH ACOUSTIC SOLUTIONS

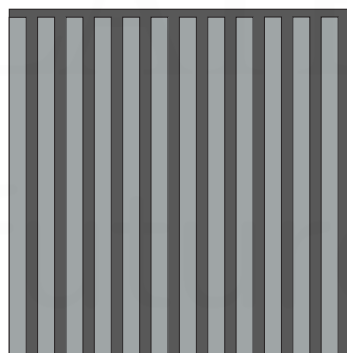
The acoustic panels from *Slate-Lite* combine effective **sound absorption** with elegant aesthetics.

Instead of the conventional wood look, these acoustic panels offer a 100% natural stone surface, giving any space an exclusive touch.

The ultra-thin stone veneers are precisely pressed onto the slats of the panels, making each panel unique due to the **individual stone structure!**



Decors: Falling Leaves



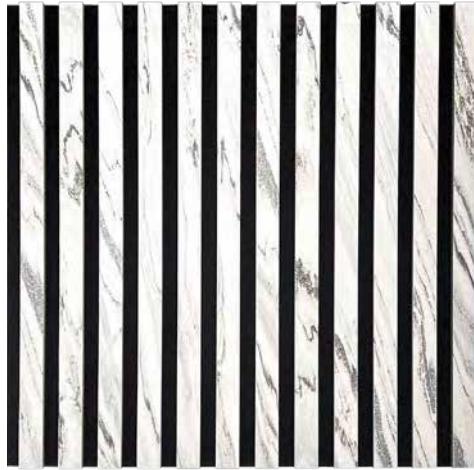
60X60 CM  
24X24 INCHES







FALLING LEAVES

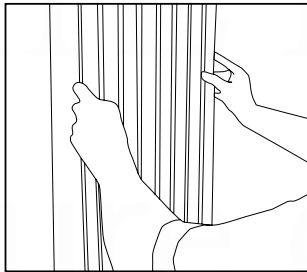
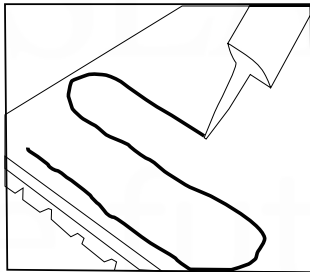


ARCTIC WHITE

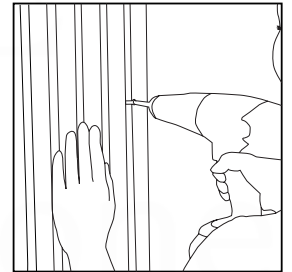


NERO

A



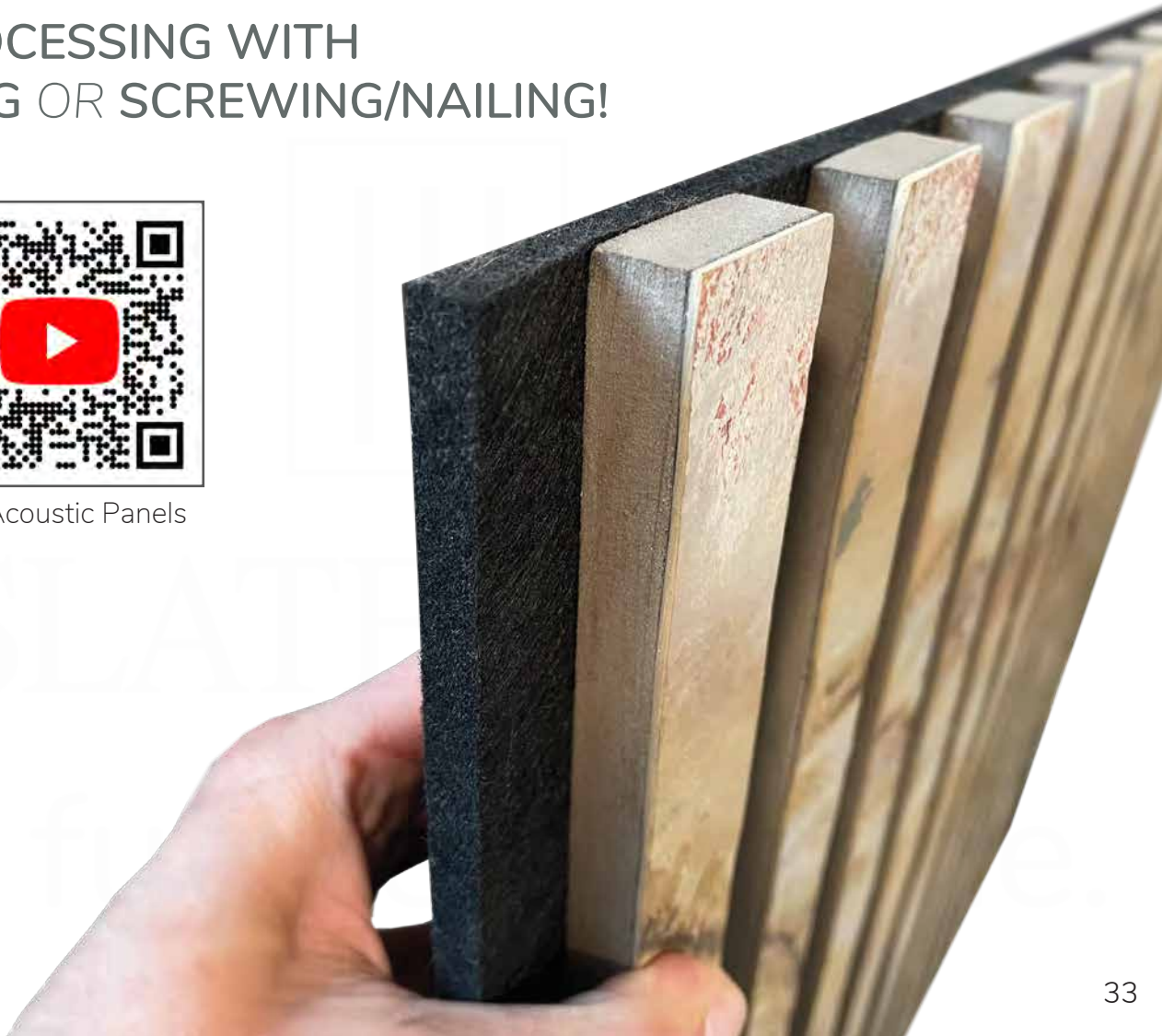
B



EASY PROCESSING WITH  
ADHERING OR SCREWING/NAILING!



Our Acoustic Panels



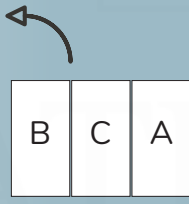
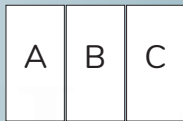


# STICK & GO!

## SELF-ADHESIVE STONE VENEERS

The quick and easy way for modern interiors: Our **Stick & GO!** product line in a compact format of **300 x 600 mm / 24 x 12 inches** allows for quick handling entirely **without tools**. Simply peel off the **self-adhesive backing**, press it on, and you're done!

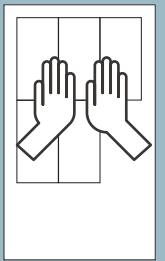
1



2



3



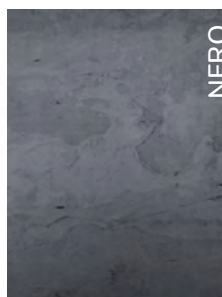
BLANCO



BURNING FOREST



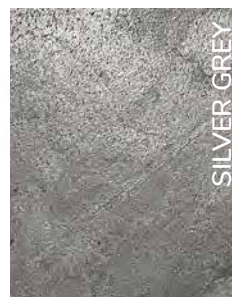
FALLING LEAVES



NERO



RUSTIQUE



SILVER GREY





the future  
of stone.

## THE PERFECT STONE WALL IN 30 MINUTES

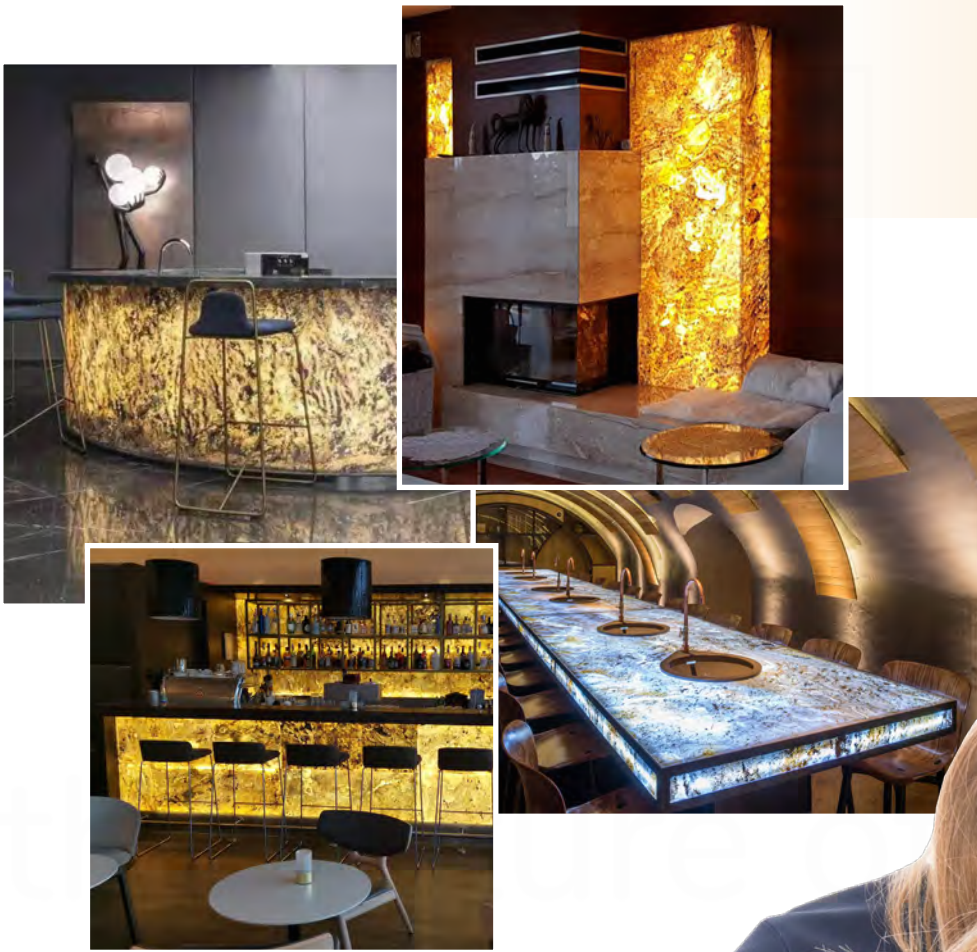
With our Stick & GO! stone veneers you can create **indoor walls** in no time.

The convenient size allows an easy application, while the changing structures of the 100% natural stone surface creates amazing and **unique wall designs**.



See this wall project being realized in just 30 minutes!





## AWESOME LIGHT EFFECTS WITH BACKLIT STONE

- ✓ Various lighting effects possible
- ✓ Suitable for any light source
- ✓ Unique eye-catchers with lighting



INTERNATIONAL



USA

GET INSPIRED:  
MORE PROJECT  
PICTURES!





# LIGHT-PERMEABLE STONE: ► BECOME A LIGHT DESIGNER!



Thanks to the **translucent background**, all stone veneers from our *Translucent* product line can be illuminated with a light source behind the stone panel.

With this backlighting, you can achieve **impressive highlights** - both in private settings and for businesses, counters, restaurants, or bars.





Decors from left to right ► Falling Leaves, Rustique



# EASY INSTALLATION

## WITH TWO PRODUCT LINES

### TRANSLUCENT

Our regular **TRANSLUCENT** stone veneers impress with the usual *Slate-Lite* flexibility and are suitable for all creative projects.

For large-scale installation, an acrylic glass backing is typically used between the light source and the stone sheet.



Bendable radius:  
10 cm / 4 in



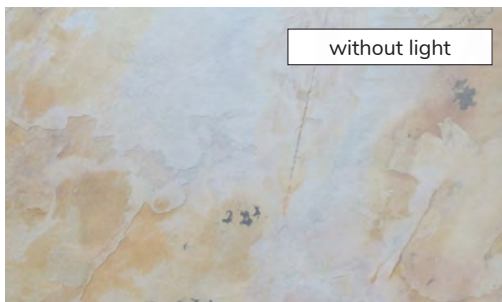
✓ Flexible ✓ Various sizes

### STONE BOARDS

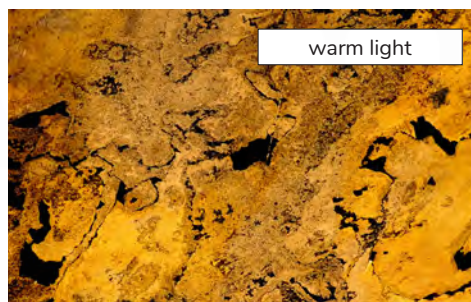
Our **STONEBOARDS** are the easy solution for larger areas: Thanks to their greater material thickness, you can install the stone sheet directly in front of the light source, without any additional backing material!



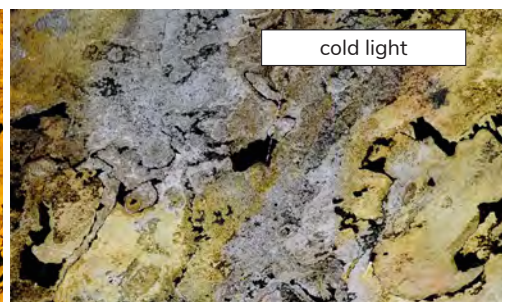
✓ Stable ✓ No backing needed



without light



warm light



cold light

RGB





# LIGHTBOARDS

## READY-MADE LED PANELS IN CUSTOM SIZES

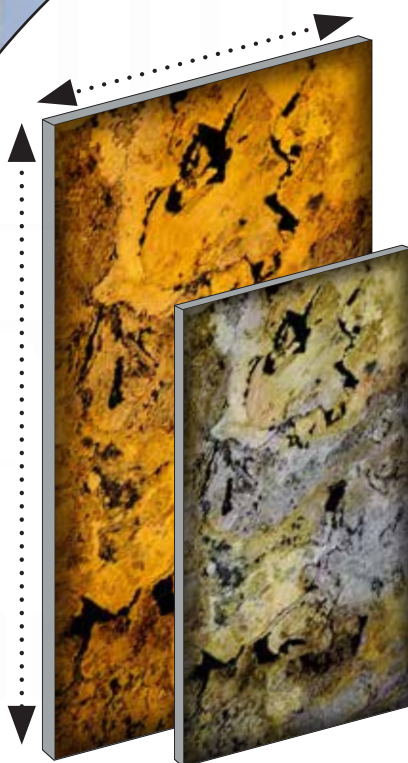


You want everything completely ready in one piece?

Then have a look at our **all-inclusive package** with a guaranteed WOW effect: Our **Lightboards** are **custom-made LED panels** featuring our light-transmitting stone veneers in **your desired size!** High-quality LED strips create stunning lighting effects, available in either colorful RGB lighting or warm/cool white lighting.



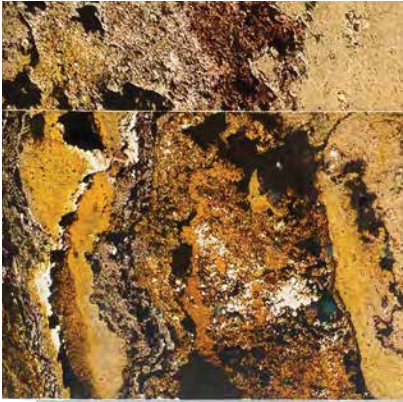
Get a closer look!





# LED-SHEETS

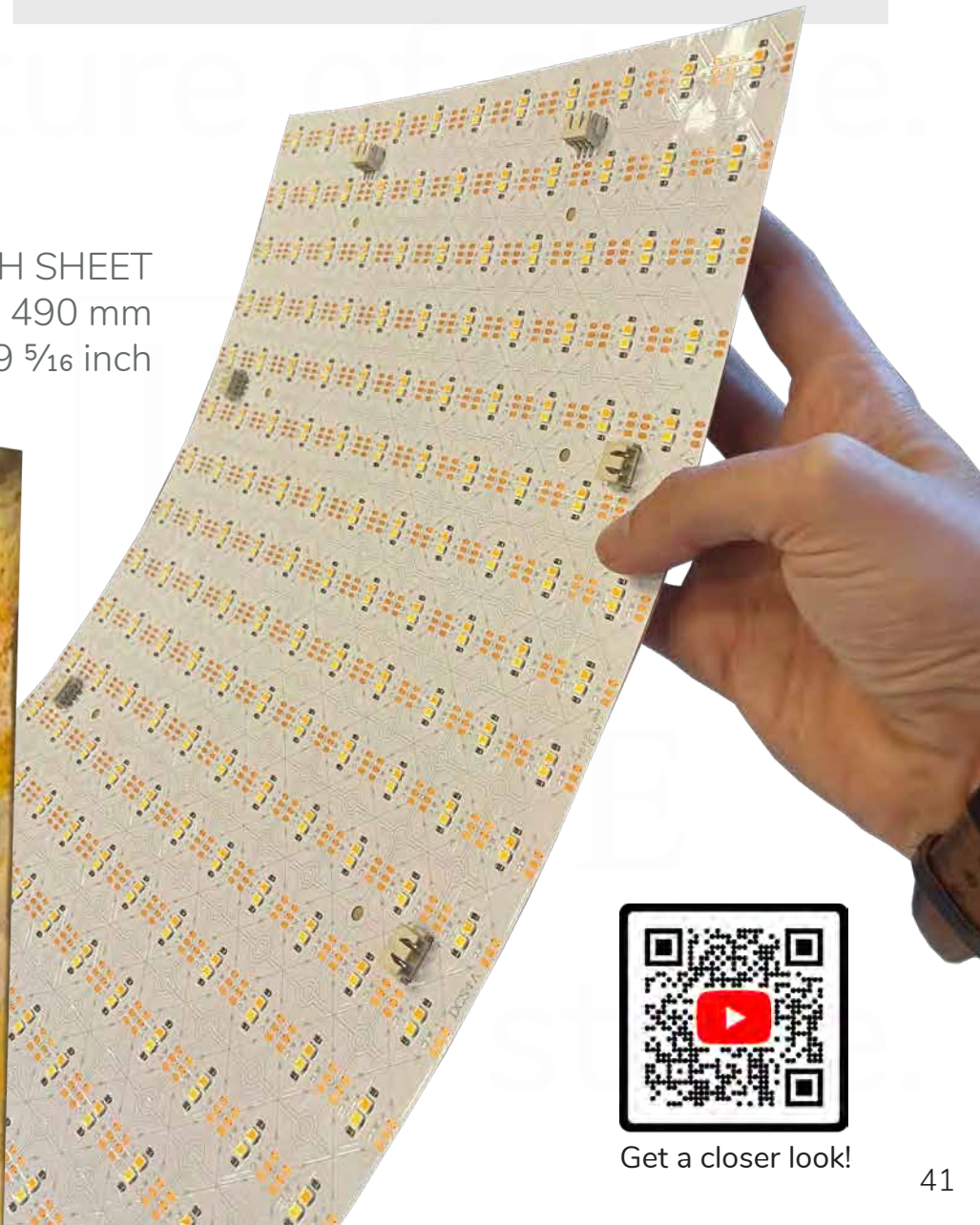
## DIY-LIGHTNING WITH SELFADHESIVE BACKING



Our ultra-thin and **flexible LED Sheets** are equipped with a convenient **self-adhesive backing**, making them easy to install without any additional tools. Whether for flat surfaces or curves – the LED Sheets adapt flexibly to any shape and can be expanded and connected as desired!

Combined with the translucent stone veneers from our Translucent product line, breathtaking effects are created.

EACH SHEET  
245 x 490 mm  
9 5/8 x 19 5/16 inch



Get a closer look!





DIN EN 15102:2011-12  
DIN EN 15102:2008+A1:2011

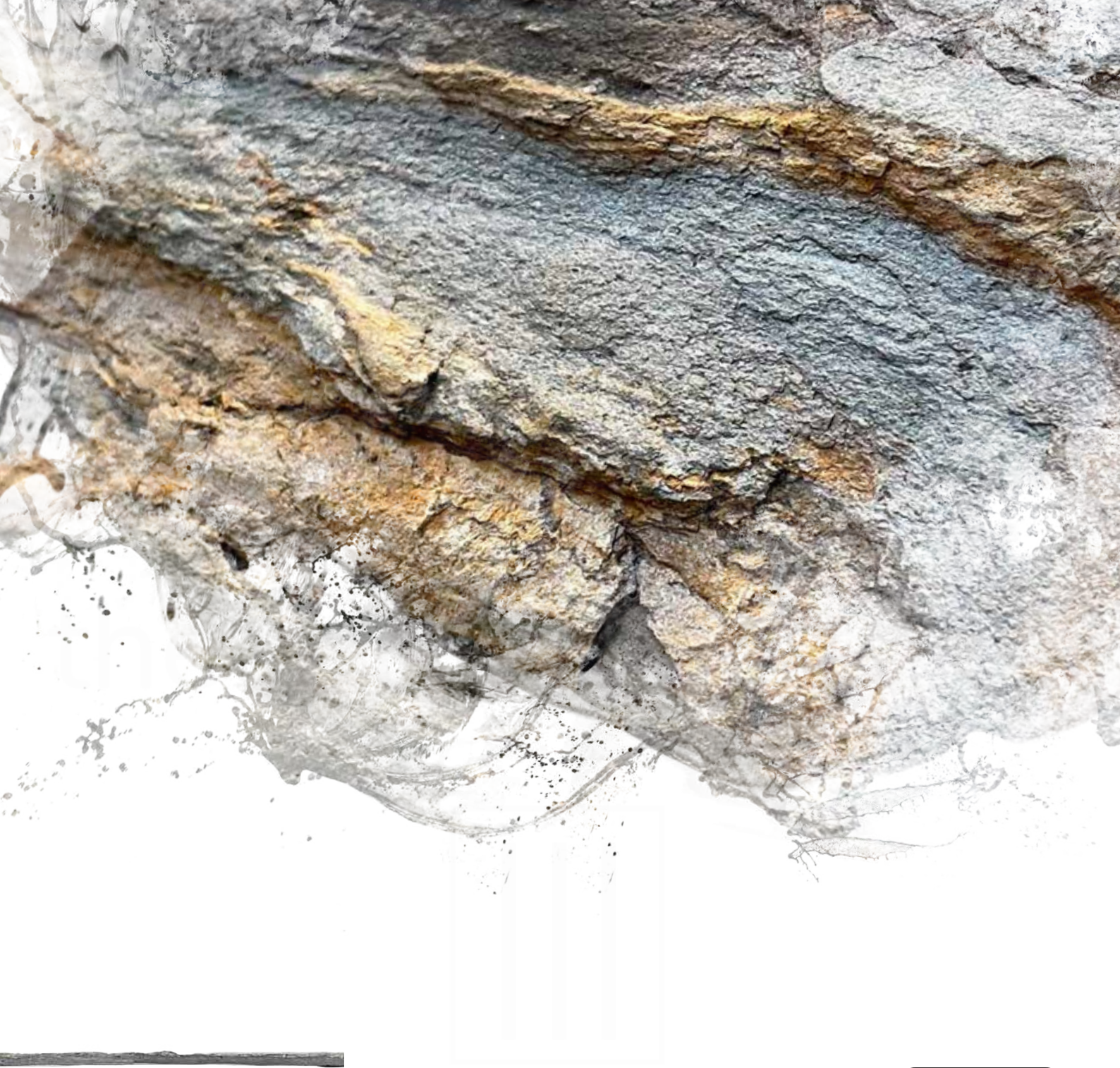
MPA NRW.



# the future of stone.



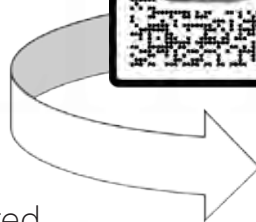




DO YOU NEED

# MORE IMAGES AND INSPIRATION?

Then simply scan the **QR codes** next to your desired decor on the following pages with your mobile phone camera, and you will instantly receive **additional material photos** and **project examples** with that decor!

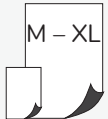




# \* BRIGHT COLLECTION

Light and friendly is the motto of the ‚Bright Collection‘:  
Whether smooth and with few patterns or with expressive lines and grain patterns - a comfortable atmosphere is guaranteed with all decors here.

ICE PEARL  
// LIMESTONE



SL

UTE

NOT SUITABLE FOR  
WET AREAS!



Also available  
as PURE <sup>1)</sup>

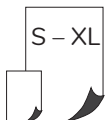
WHITE  
SPARKLE  
// MARBLE



SL

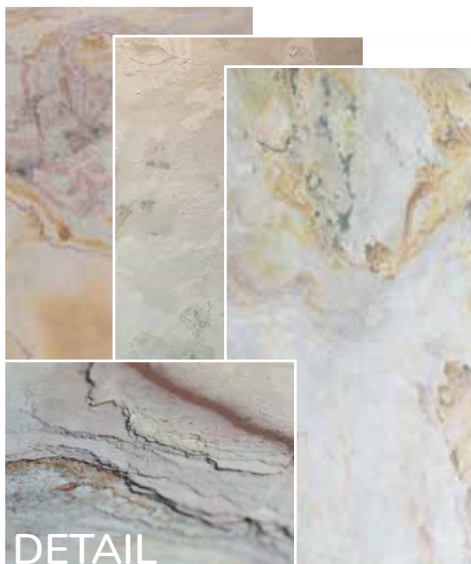


BLANCO  
// SLATE



SL TL

UTE STICK & GO

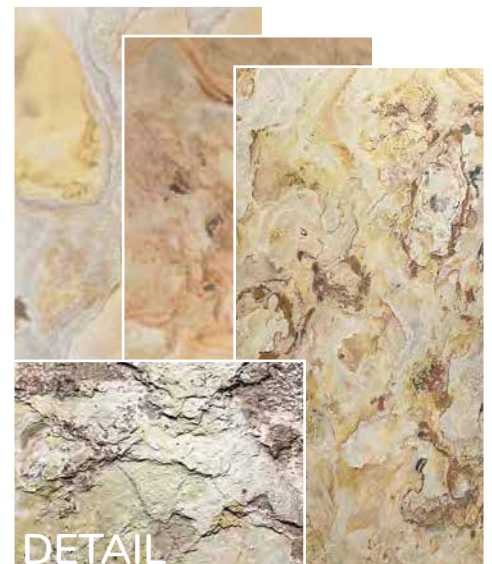


FALLING  
LEAVES  
// SLATE



SL TL

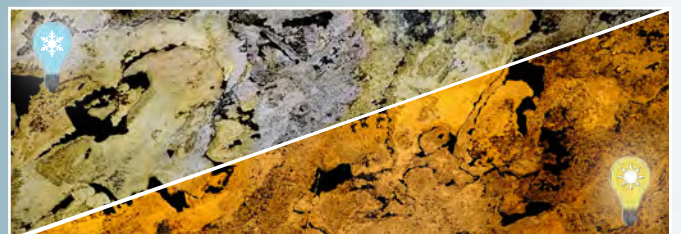
UTE STICK & GO



## DID YOU KNOW?

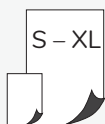
Create unique lighting effects  
with our *Translucent* line!

► Image Example: FALLING LEAVES





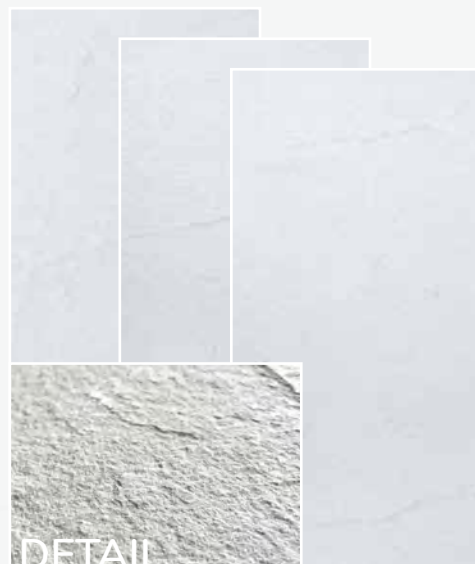
**TAN**  
// SLATE



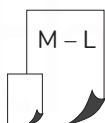
UTE



**ITALIAN WHITE**  
// MYCA



**ARCTIC WHITE**  
// MARBLE



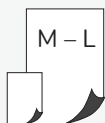
**SILVIA**  
// MARBLE



UTE



**BRIGHT CREEK**  
// MARBLE



UTE



**CLEAR WHITE**  
// SANDSTONE



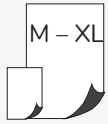
<sup>1)</sup> PURE versions of a decor typically do not include color inclusions.

<sup>2)</sup> Also available as STACKING STONES.

<sup>3)</sup> Available in two directions: 45° and 315°



GREEN PEARL  
// LIMESTONE



SL

UTE

NOT SUITABLE FOR  
WET AREAS!



DETAIL

MYSTIC WHITE  
// MARBLE



SL

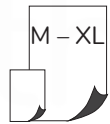
UTE



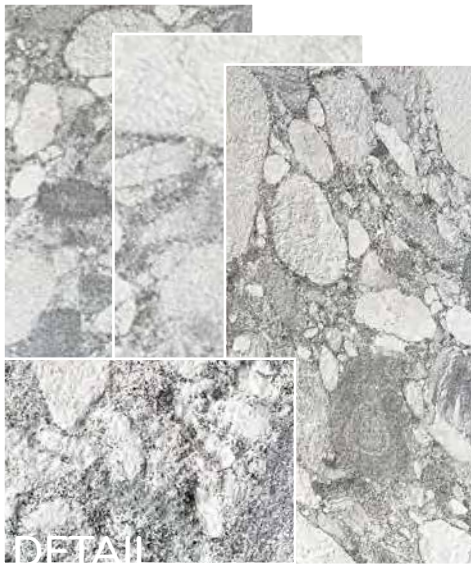
DETAIL

Available as  
45° and 315°. <sup>1)</sup>

PEBBLE BEACH  
// MARBLE

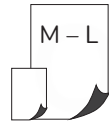


SL

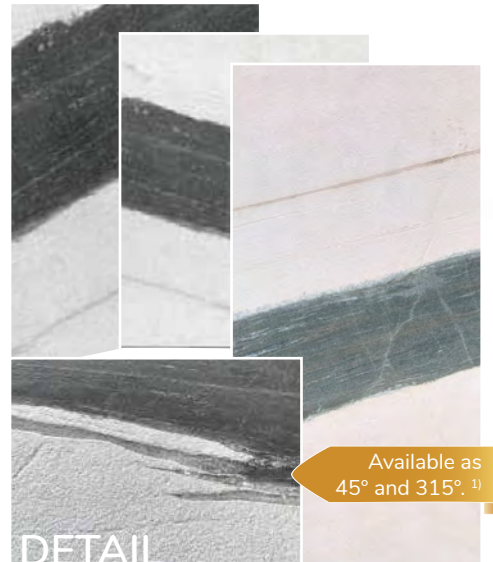


DETAIL

PANDA WHITE  
// MARBLE



SL



DETAIL

Available as  
45° and 315°. <sup>1)</sup>



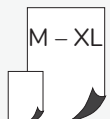
<sup>1)</sup> Available in two directions: 45° and 315°



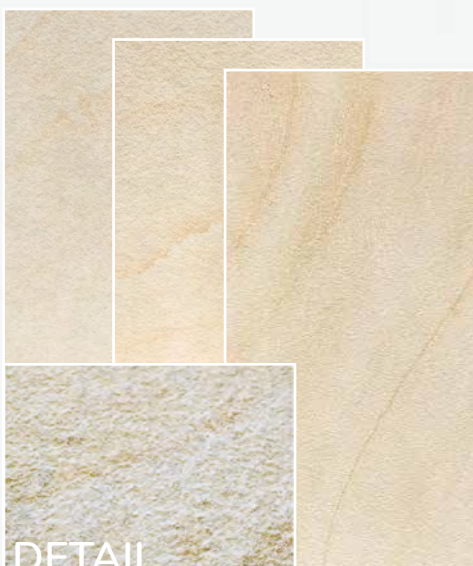
# \* COLOR COLLECTION

For those who prefer something more eye-catching, our 'Color Collection' offers a variety of possibilities:  
Vibrant colors and expressive textures liven up any space and provide exciting design options.

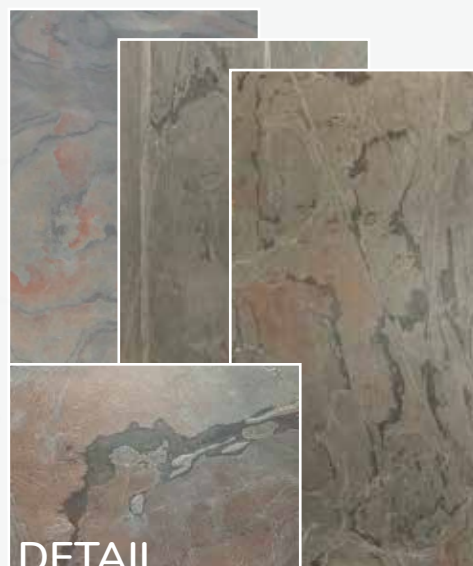
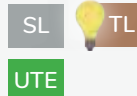
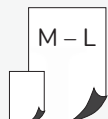
**CLEAR WHITE STRIPES**  
// SANDSTONE



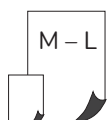
SL



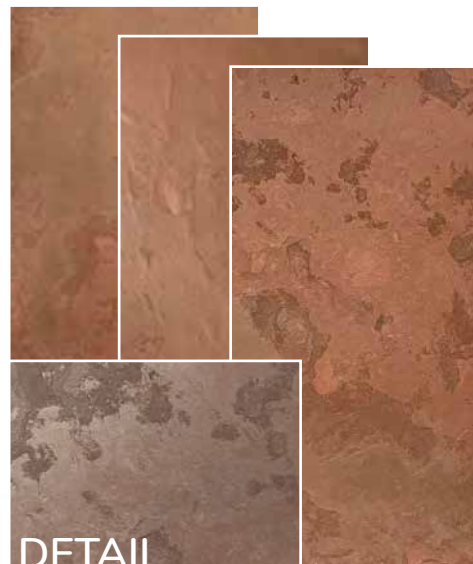
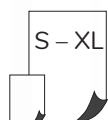
**MOLTO ROSA**  
// SLATE



**COBRE**  
// MYCA



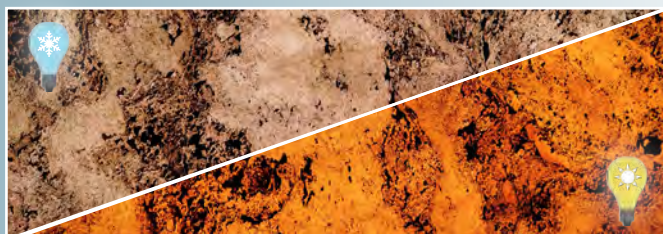
**TERRA ROSSO**  
// SLATE



## DID YOU KNOW?

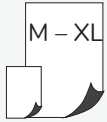
Create unique lighting effects with our *Translucent* line!

► Image Example: TERRA ROSSO



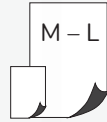


TEAK  
WOOD  
// SANDSTONE



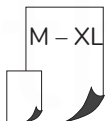
DETAIL

RAINBOW  
// SANDSTONE



DETAIL

PINK  
LIMESTONE  
// LIMESTONE



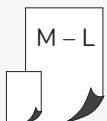
DETAIL

RED SAND  
// SANDSTONE



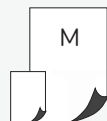
DETAIL

COBRE  
NEW  
// MYCA



DETAIL

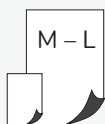
SILVIA  
VEIN  
// MARBLE



DETAIL



RED  
SHELL  
// MARBLE



SL



DETAIL

RED  
CREEK  
// MARBLE

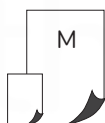


SL



DETAIL

BELGIUM  
BLUE  
// SLATE

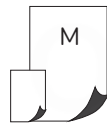


SL



DETAIL

SILVIA  
WILD  
// MARBLE



SL



DETAIL

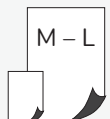
# TERRA ROSSO



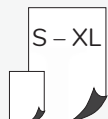
# \* SHINY COLLECTION

For more sparkle in your life: The decors in our 'Shiny Collection' reflect light thanks to the natural quartzite content in the stone, creating a truly shiny atmosphere.

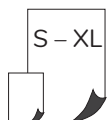
VERDE GRIS  
// MYCA



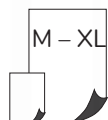
BURNING FOREST  
// MYCA



SILVER GREY  
// MYCA



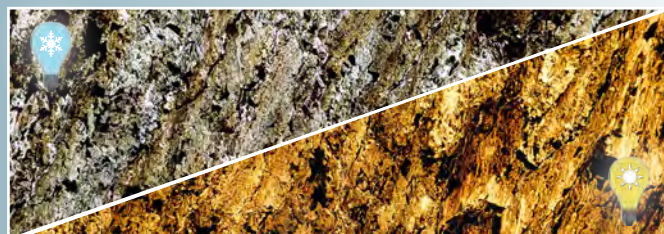
MARE  
//MYCA



## DID YOU KNOW?

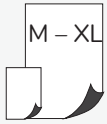
Create unique lighting effects with our *Translucent* line!

► Image Example: BURNING FOREST





**GALAXY  
BLACK**  
// MYCA



UTE



Also available  
as PURE <sup>2)</sup>

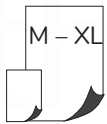
DETAIL

**MATRIX**  
// MYCA



DETAIL

**GREY  
LIMESTONE**  
// LIMESTONE



DETAIL

**ARGENTO**  
// MYCA

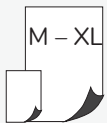


UTE



DETAIL

**ARGENTO  
AURO**  
// MYCA



UTE



DETAIL

**AURO**  
// MYCA



UTE



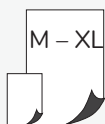
DETAIL

<sup>1)</sup> Also available as STACKING STONES

<sup>2)</sup> PURE versions of a decor typically do not include rust inclusions.



VERDE  
// MYCA



UTE

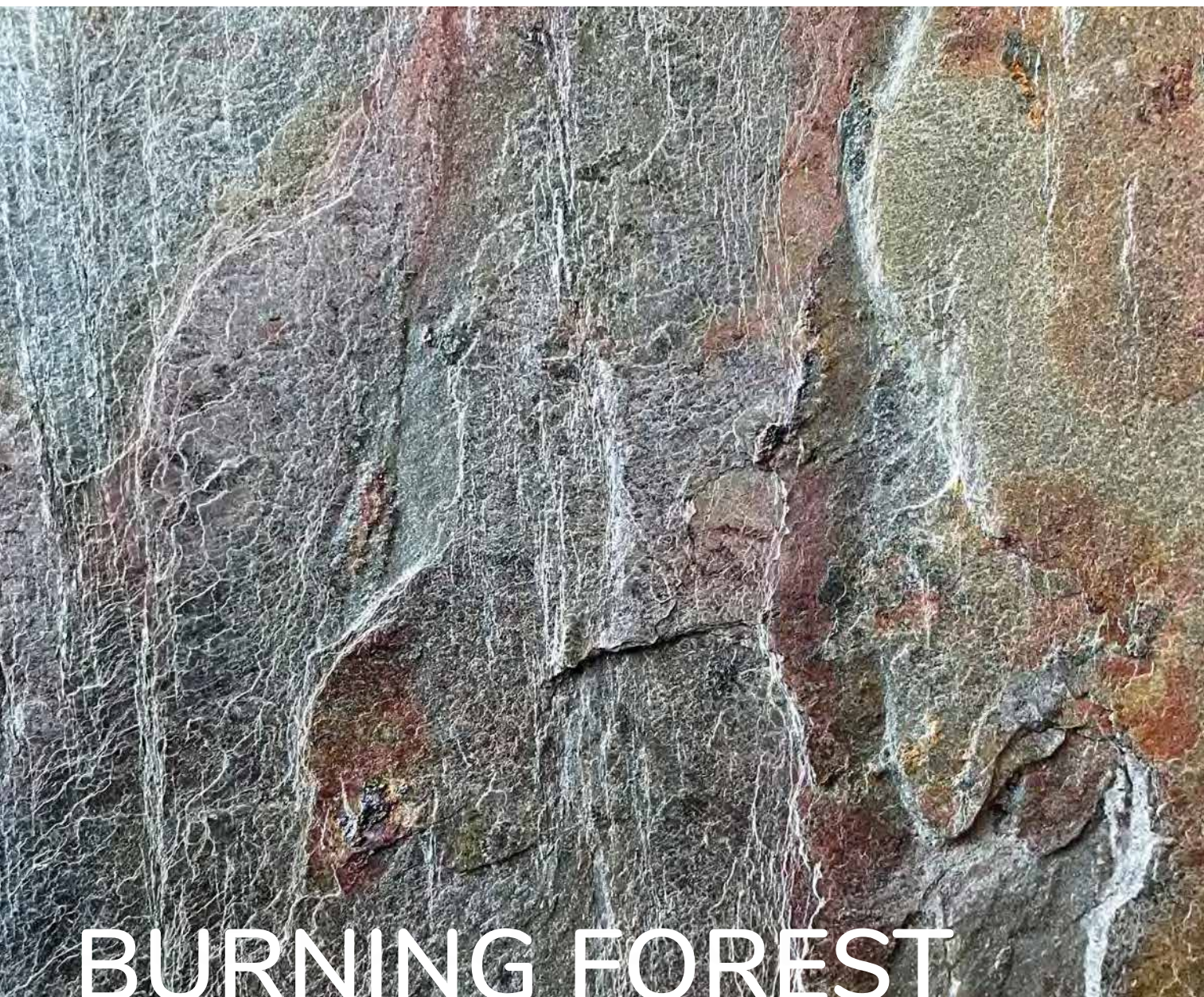


BLACK  
PEARL  
// SANDSTONE



SL

UTE



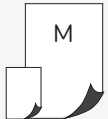
# BURNING FOREST



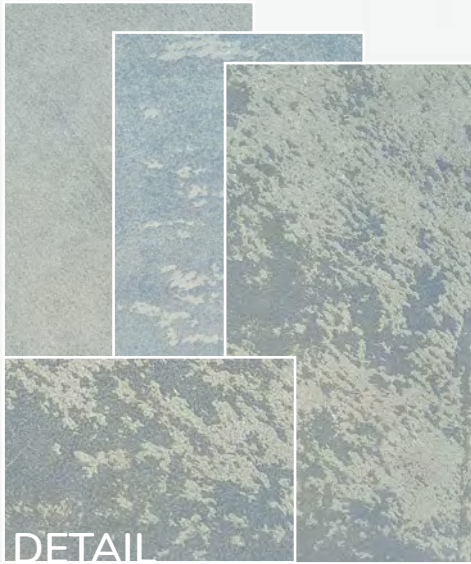
# \* STRUCTURE COLLECTION

The decors in our 'Structure Collection' all feature bold textures and grain patterns on the stone surface. Together with the intense colors, it's the perfect choice for those who prefer something more robust and rough.

**SWISS GREY**  
// SANDSTONE



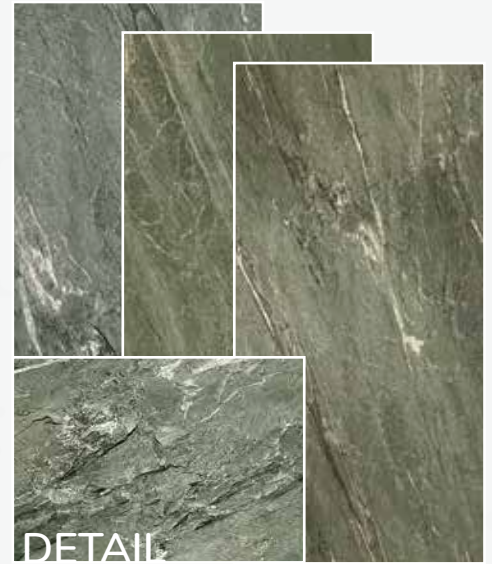
SL



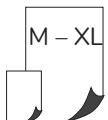
**GREEN RIVER**  
// SLATE



SL



**RAINFOREST GREEN**  
// MARBLE



SL



UTE



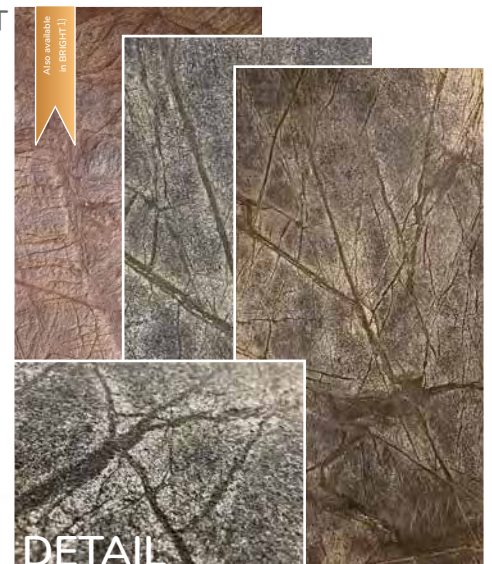
**RAINFOREST BROWN**  
// MARBLE



SL



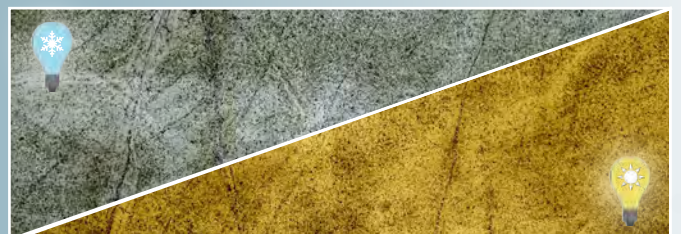
UTE



## DID YOU KNOW?

Create unique lighting effects with our *Translucent* line!

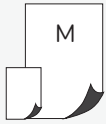
► Image Example: RAINFOREST GREEN



1) Also available in a lighter BRIGHT version



SUMMER  
BREEZE  
// SANDSTONE



SL



DARK  
CREEK  
// MARBLE

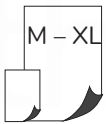


SL

UTE



MONSOON  
BLACK  
// MARBLE



SL

UTE

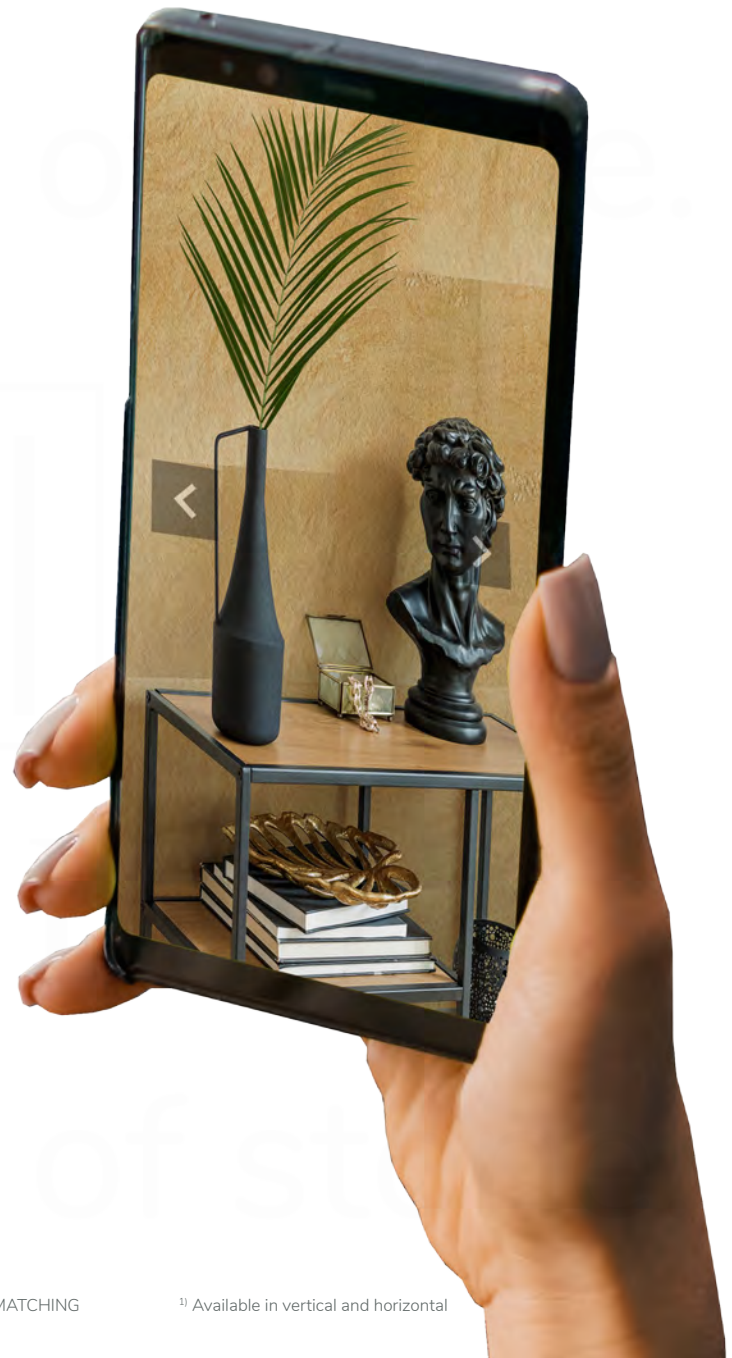


Available in  
2 versions <sup>1)</sup>

DO YOU NEED

MORE IMAGES AND  
INSPIRATION?

Then simply scan the **QR codes** next to your desired decor on the following pages with your mobile phone camera, and you will instantly receive **additional material photos** and **project examples** with that decor!





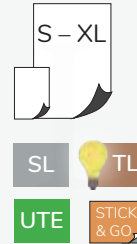
# \* DARK COLLECTION

Timelessly classic and elegant: The decors in our 'Dark Collection' create perfect contrasts and seamlessly blend into any style of interior design. For design statements with style!

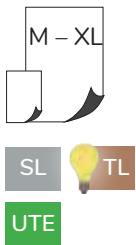
**NERO**  
// SLATE



**RUSTIQUE**  
// SLATE



**CALIFORNIA GOLD**  
// SLATE

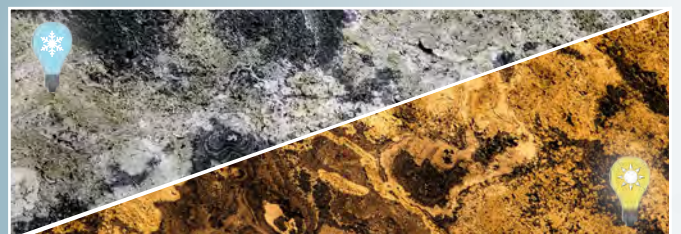


**D.BLACK**  
// MYCA



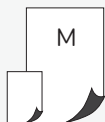
**DID YOU KNOW?**  
Create unique lighting effects with our *Translucent* line!

► Image Example: RUSTIQUE





**JADE GREEN**  
// LIMESTONE



SL

UTE



DETAIL

**ARCOBALENO  
COLORE NEW**  
// SLATE



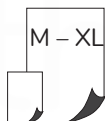
SL

UTE



DETAIL

**CALIFORNIA  
GREY**  
// SLATE



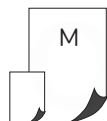
SL

UTE



DETAIL

**BLACK  
LINE**  
// SLATE

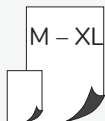


SL



DETAIL

**TERRA  
NOIR**  
// SLATE



SL



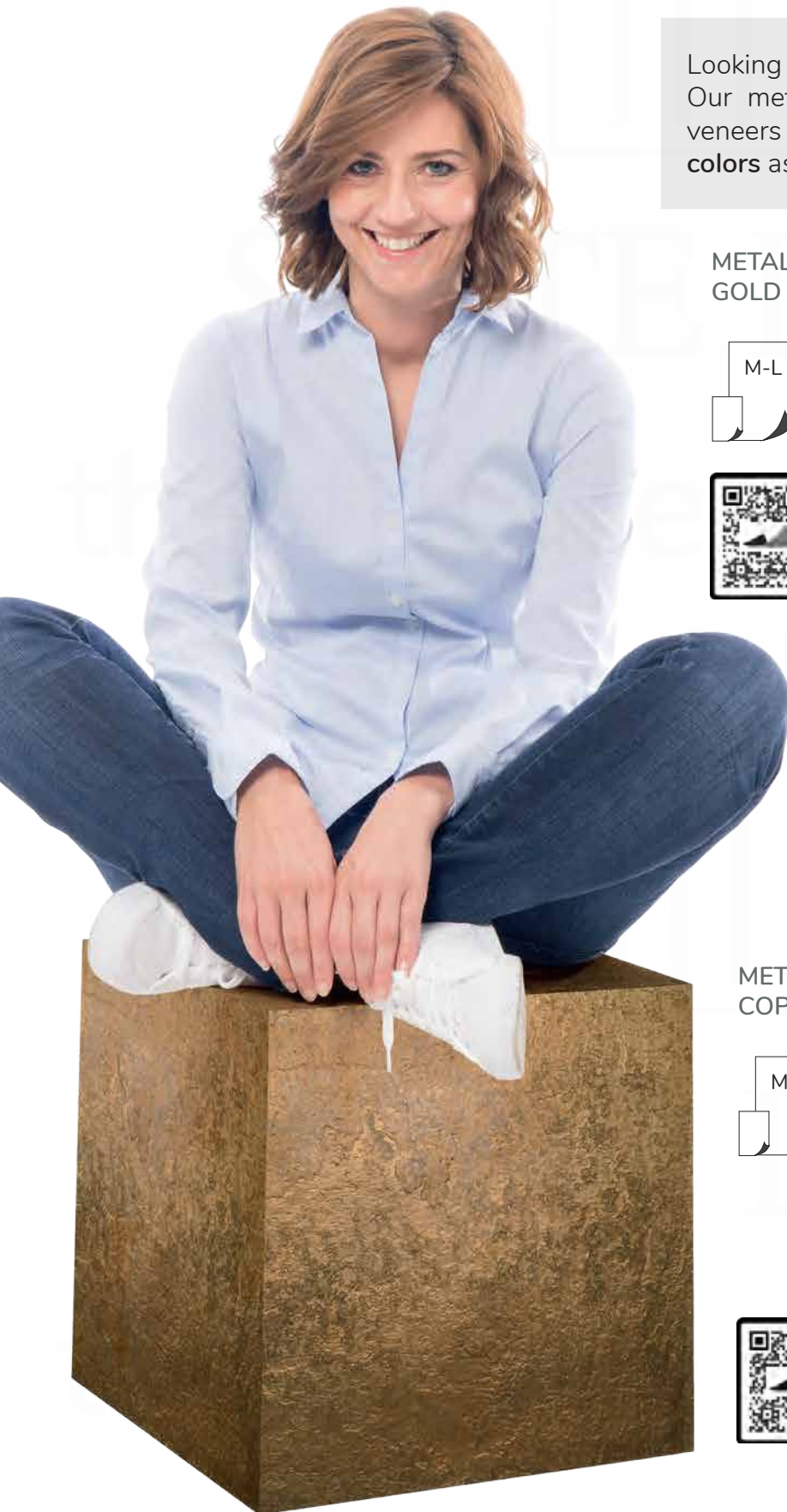
DETAIL

Available  
in 3 versions <sup>1)</sup>



# ARTDECORS LITE

## VENEERS WITH METALLIC FINISH

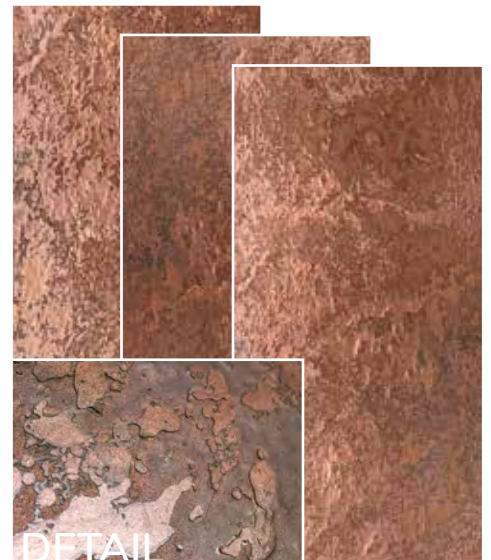


Looking for something special?  
Our metal decors are extremely thin stone  
veneers that have been coated with **metallic  
colors** as a **final finish!**

METAL  
GOLD



METAL  
COPPER







# APPLICATION: EASIER THAN YOU THINK!

Thanks to the low overall thickness of the material, Slate-Lite can be installed by both professionals and amateurs in just a few simple steps!

# 1



## CUTTING

Cut the stone veneer to the appropriate size if necessary. This can be done using a hand saw, table saw, multitool, or laser.

# 2



## PROTECT

Depending on the application location, apply impregnation or sealing with a short-nap roller.

# 3



## ADHERING

Apply an appropriate adhesive evenly on the mounting surface or the back of the material.

# 4



## INSTALLING

Position the stone veneers at the desired location and press them in place.  
**DONE, THAT'S IT!**





# WATCH OUR VIDEO!

## PROCESSING INFORMATION

Find answers to the most common questions in our FAQ online and see in our **main video** how easy it is to process *Slate-Lite* efficiently.



INTERNATIONAL



USA





# OUR ADDITIONAL SERVICES

WE MAKE YOUR PROJECT COME TRUE!



## WORKBOX

With our **in-house workbox** department,  
we are at your side as a **full-service partner** for your project:

So you can order our stone veneers directly  
in **your individual custom size!**

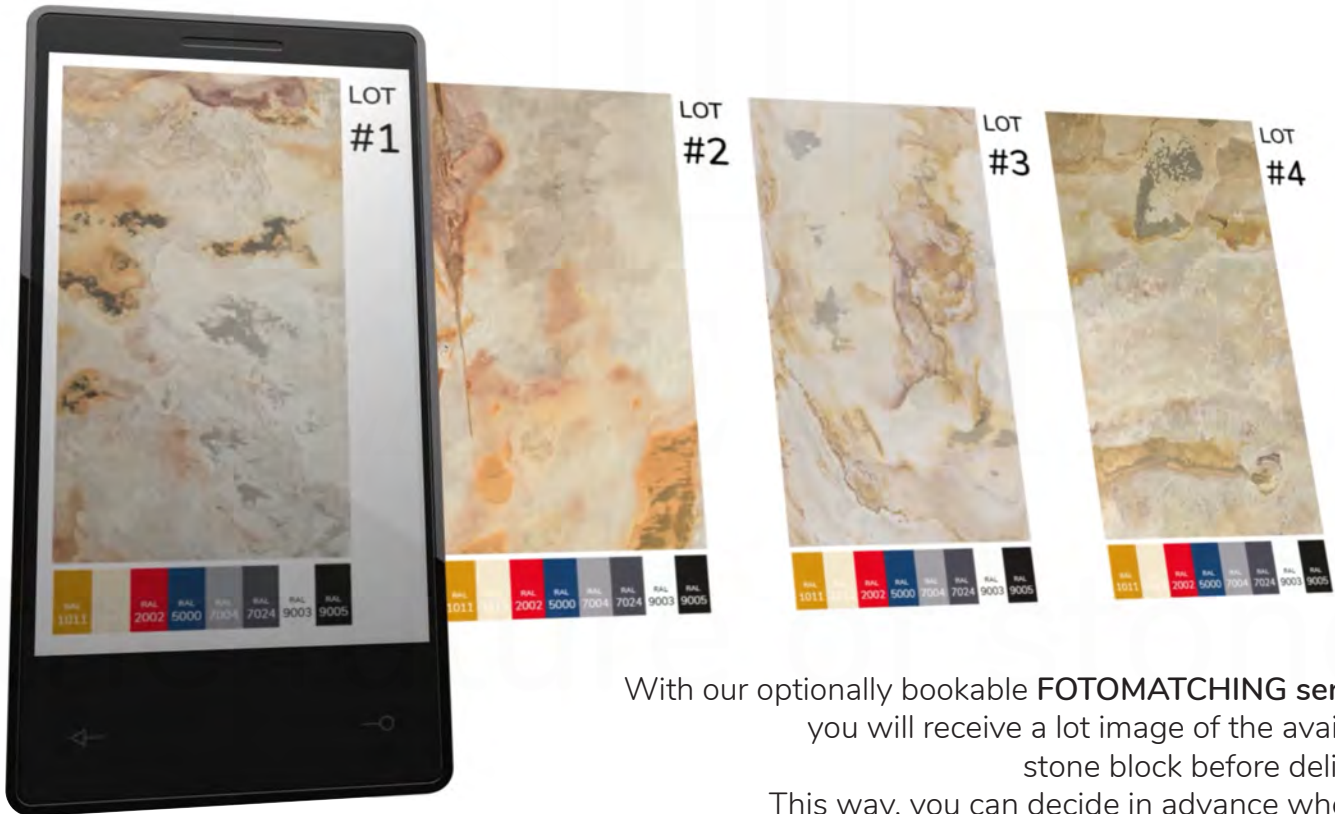
Depending on availability and scope, your stone sheet will then be  
produced to the exact millimeter in our factory for you or cut to size.

Thanks to our **laser service, custom shape cutouts**,  
such as company logos or other custom designs,  
are also easily achievable!





# FOTOMATCHING



With our optionally bookable **FOTOMATCHING** service, you will receive a lot image of the available stone block before delivery. This way, you can decide in advance whether you like the pattern variation or if you would prefer to receive a different batch!

## ONLINE-SHOWROOM YOUR INDIVIDUAL VIDEO CHAT

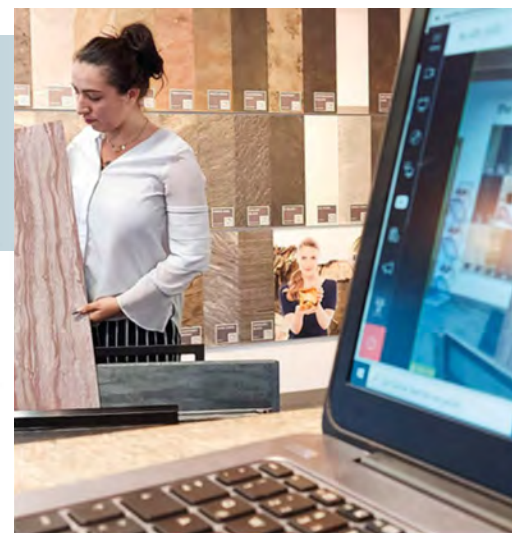


INTERNATIONAL



USA

Arrange your personal **consultation appointment for free** in an online video chat.





# ACCESSORIES

In perfect coordination, our extensive range of accessories enables worry-free handling at the highest level. Whether it's adhesive, protective products, or suitable tools: We offer everything you need for perfect processing.



## CARE

### SPECIAL CLEANER

Removes adhesive residues  
250 ml / 1.000 ml  
8.45 fl oz / 33.8 fl oz



## CARE

### AKEMI OIL AND GREASE REMOVER

Removes oil and grease stains  
250 ml / 8.45 fl oz



## PROTECTION

### SPECIAL IMPREGNATOR

Protection against oil, grease,  
and water stains  
1.000 ml / 33.8 fl oz



## PROTECTION

### SPECIAL PROTECTION

Weatherproof impregnation with  
beading effect  
250 ml / 1.000 ml  
8.45 fl oz / 33.8 fl oz



## PROTECTION

### 2C-PROTECTION FURNITURE

Specifically designed for furniture  
processing  
625 ml / 3.125 kg  
21.13 fl oz / 110.23 fl oz



## PROTECTION

### EXTREME PROTECTION

Sealing for high usage  
areas like kitchen & bathroom  
1,2 kg / 2,4 kg / 4,8 kg  
42.32 / 84.65 / 169.31 fl oz



## ADHESIVE

### SLATE-LITE EXTREME ADHESIVE

Slate-Lite adheres both indoors  
and in outdoor and wet areas

SLATE|LITE (B3) ULTRA|THIN<sup>eco+</sup> (A2)

600 ml / 20.28 fl oz  
7 kg / 246.91 fl oz  
15 kg / 529.10 fl oz



## ADHESIVE

### TRANSLUCENT CRYSTAL CLEAR

Invisible adhesive bonds for *Translucent*

TRANSLUCENT 600 ml / 20.28 fl oz



## ADHESIVE

### INSTANT ADHESIVE

Super glue with activator spray for  
fixing troublesome spots

150 ml / 20 g  
5.07 / 0.70 fl oz





We continuously optimize our products, so it's possible that individual accessories may have been replaced since the printing of this catalog. On our website, you will always find the latest products, information, as well as detailed data sheets and processing guidelines.



## ADHESIVE

**HRANIFIX PREMIUM**  
Spray contact adhesive



## APPLICATION

**ADDITIONAL ACCESSORIES**  
Cold wax for edge processing  
Natural stone silicone



## APPLICATION

**PROCESSING TOOLS**  
A2/B3 notched trowel  
Finishing spatula  
Sausage caulking gun  
Short pile rollers/roller frames



## MOLDING PROFILES

BLACK

SILVER

STEEL

### CONNECTING PROFILES PROFILE

4,8 x 3,0 x 34 x 2.500 mm  
0.18 x 0.11 x 1.33 x 98.42 inch  
inch

### END PROFILE

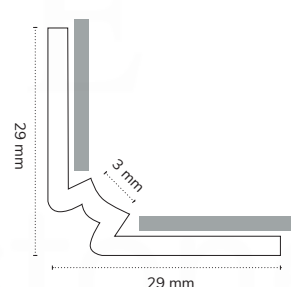
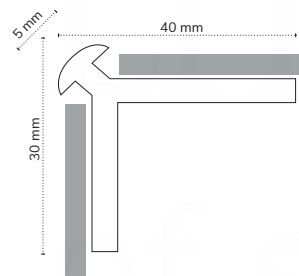
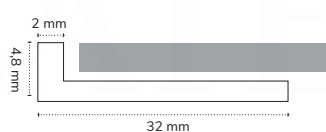
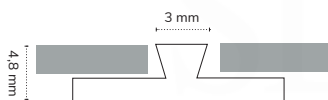
4,8 x 2,0 x 32 x 2.500 mm  
0.18 x 0.07 x 1.25 x 98.42 inch

### EXTERNAL CORNER PROFILE


30 x 5,0 x 40 x 2.500 mm  
1.18 x 0.19 x 1.57 x 98.42 inch

### INTERIOR CORNER

29 x 3,0 x 29 x 2.500 mm  
1.14 x 0.11 x 1.14 x 98.42 in






A close-up photograph of a slate surface, showing a mix of brown, tan, and grey tones with a slightly uneven, layered texture.


Our multicolor slates typically have a slightly softer stone surface and impress with their rich colors as well as constantly changing patterns and textures.

# SLATE

A close-up photograph of a mica surface, characterized by a rough, granular texture with various shades of grey, brown, and white.


Mica typically has a slightly rougher surface with homogeneous patterns. A special eye-catcher is the shine effect created by the natural quartzite content in the stone.

# MYCA

A close-up photograph of a limestone surface, showing a smooth, light-colored stone with subtle variations in tone and texture.

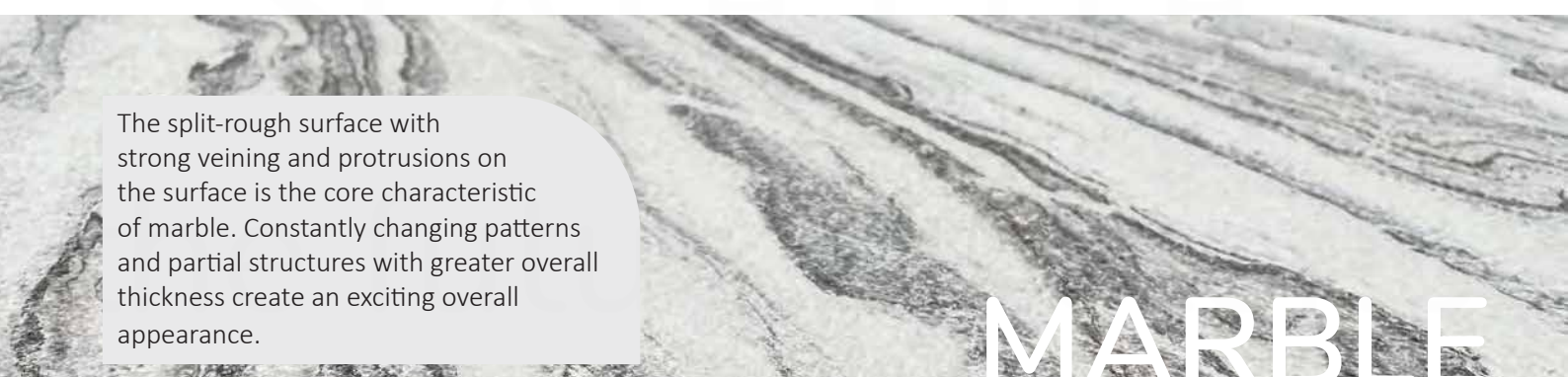
Our limestones impress with a smoother surface and relatively homogeneous patterns and textures.

# LIMESTONE

A close-up photograph of a sandstone surface, featuring a rough, grainy texture with warm, earthy tones of brown, tan, and orange.

Sandstones stand out with a slightly rough, somewhat grainy surface featuring subtle height variations and partial, smaller protrusions with greater overall thickness..

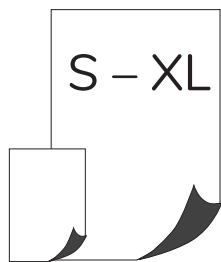
# SANDSTONE

A close-up photograph of a marble surface, showing a smooth, light-colored stone with prominent, dark, wavy veins running through it.

The split-rough surface with strong veining and protrusions on the surface is the core characteristic of marble. Constantly changing patterns and partial structures with greater overall thickness create an exciting overall appearance.

# MARBLE





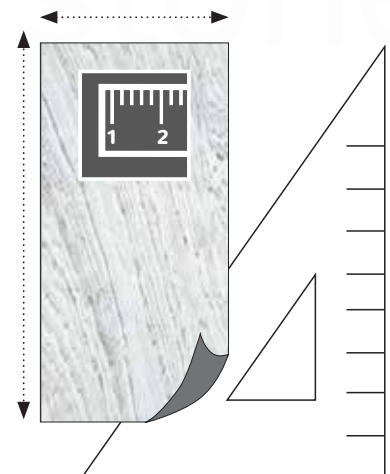
# STANDARD SIZES AND PRODUCT LINES

	S	M	L	XL
	300 x 600 mm 24 x 12 inches	1.220x 610 mm 48 x 24 inches	2.400 x 1.200 mm 94 1/2 x 47 1/4 inches	2.800 x 1.200 mm 110 1/4 x 47 1/4 inches
SLATE LITE Stacking Stones	STICK & GO!	✓	✓	✓
TRANS LUCENT	—	✓ *)	—	—
STONE BOARDS	—	—	✓	—
ULTRA THIN eco+	—	✓	✓	—
ART-DECORS lite	—	✓	✓	—

\*) Stacking stones are 1.200 x 600 mm / 47.24 x 23.62 inch

## GET YOUR STONE VENEERS CUSTOM SIZED

Simply configure your sheets online with millimeter precision or get even **LARGER SIZES up to 4 m / 156 inch** of your favorite decor if available.



## PROCESSING INFORMATION

[WWW.SLATE-LITE.COM/ENG/PROCESSING](http://WWW.SLATE-LITE.COM/ENG/PROCESSING)  
[WWW.SLATE-LITE.US/PROCESSING](http://WWW.SLATE-LITE.US/PROCESSING)

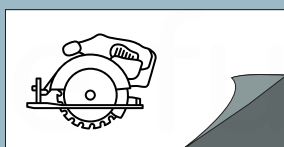


INTERNATIONAL

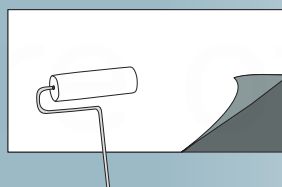


USA

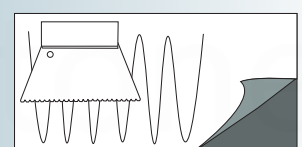
1



2



3







vCARD

# WORLD



+49 (0)2226 – 82 999 30



+49 (0)160 – 78 845 93



sales@slate-lite.com



slatelite.realstone



slateliterealstone

[www.slate-lite.com/eng](http://www.slate-lite.com/eng)



vCARD

# USA



1-888-817-9217



1-407-924-1396



usa@slate-lite.com



slatelite.northamerica



slateliterealstone

[www.slate-lite.us](http://www.slate-lite.us)

POWERED BY:

# PREMIER

premier.partners

LG-118J, EME Sector, DHA Phase 12 Multan Road,  
Lahore 53710 -Pakistan | +92 342 004 2042

R&D GmbH | Boschstraße 12 | 53359 Rheinbach | GERMANY  
Inc. Slate-Lite North America | 1620 Camerbur Dr | Orlando, FL 32805 | USA  
Stand: 25.02.2025 | Errors and misprints excepted.

## THE FUTURE OF STONE

